

HF11

Hiram D. Willburn

HF11Map: T4S, R8E, S 20. No hard copy file..

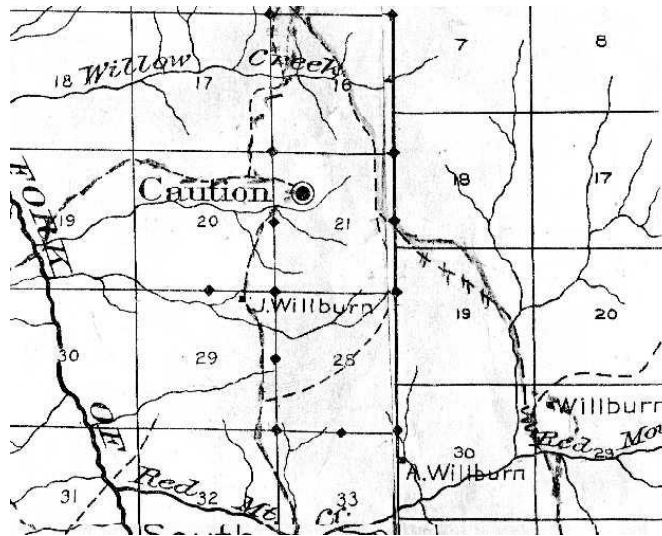
See also HF01, and the Caution Post Office and School entries.

I recorded the homestead in 1986 as the Hiram Willburn homestead-- site 05-10-54-314 (CA-TRI-1007/H). Willburn was the son of James S. Willburn (Jr.). See B05 for an overview of the Willburn family.

There was no hard copy H.E. file available to review for this tract of land. It may be on file at HR SRNF. This tract of land is situated to the south of Willow Creek in the Lightfoot Creek drainage to the east of Trail HTMR-11 (now a FS road).

It is not clear how this tract of land came under the ownership of Hiram Willburn. It shows up on Lowden's TC 1894 map as being owned by Frank Doolittle (see HA01, F32). It is not clear from my research just how Doolittle had acquired this tract. It is even less clear how Willburn became the owner.

This was also the location (#2) of the Caution Post Office (F20b) and Caution or North Fork School (F35). See those entries for more information. The 1909 TNF map shows the location on this tract of the Caution Post Office.



TNF 1909 shows the Caution PO (location #2) at the Hiram Willburn place.

Homestead Description

I recorded this homestead in 1986 as site 05-10-54-314 (there should be some B&W contact sheets and negatives with the site record). The homestead was situated on a series of gently sloped southwest facing terraces with some good springs. There was little

HF11

remaining of the structures with only a few boards and historic artifacts; nails, broken glass, kitchen wood stove parts (they usually last the longest on most abandoned homesteads), ceramic sherds, machine made can, and a large 24" circular saw blade and some hay mower parts (see site record).

There were four living fruit trees (and three or four dead fruit trees) located to the north of the cabin (see Diagram 1). The camp remains date from the logging era of the 1950s and 1960s.

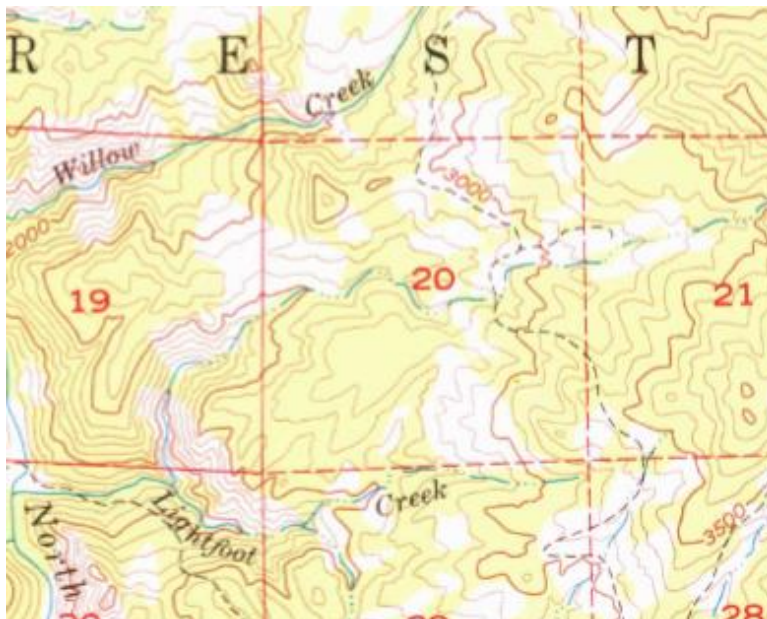
It is not known when the tract was sold. It is likely that Willburn (like other extended family members living in this immediate area) abandoned the homestead sometime in the early 1930s. It may have been sold to the Travis Brothers since the owner in 1986 was Larry Brown who owned the Flying Double A Ranch and had previously purchased the Travis Ranch lands (see entry for the Travis brothers). He had by 1986 constructed two small ponds for livestock on the tract (see site map).

Census

For census data see B05.

Trails

The 1955 USGS 15" map shows a spur trail linking the homestead in Section 20 with trail HTMR-11.



1955 Kettapom USGS 15'

The map shows a spur trail linking the homestead in Section 20 with trail HTMR-11.

Diagram 1
Site map

